



# General Spanish Course in Colombia

Study for: 15, 20 or 30 hours per week

Group size: Minimum 2 / Maximum 8

Course Length: Flexible



¡EXPERIENCE LEARNING SPANISH IN COLOMBIA!

[www.spanishworldinstitute.com](http://www.spanishworldinstitute.com)  
[info@worldofstudies.com](mailto:info@worldofstudies.com)



# WHO ARE WE?

SPANISH WORLD INSTITUTE (SWI) is a Spanish Language School in Colombia that provides overseas students with Spanish training regardless their linguistic level. We are an academic institution where student's exchange and interaction are the main tools to learn the new language and get a taste of Colombian culture.

## Culture

We facilitate a greater understanding among people of diverse cultural backgrounds and reveal the richness of South American culture, mainly Colombian.

## Quality

Spanish World Institute aims to provide high quality and effective Spanish as a second language instruction and a deeper understanding of the Colombian culture, through cross-cultural education, personalized attention and dynamic teaching methods in a professional and friendly environment.





## WHY TO CHOOSE US?

- In our Spanish school you can keep going without losing your learning process due to our Spanish courses are monitored and reviewed by our teachers. We help you to set your goals and give you constant advice in your process.
- Our Spanish courses in Colombia are personalized, dynamic and designed according to the students' linguistic needs.
- When you take a Spanish course in Colombia with us we ensure that your learning process will be in a dynamic, professional and especially friendly way.
- We offer 4 levels of teaching: beginners, elementary, intermediate and advanced, plus a DELE exam preparation.
- We use the latest academic tools and follow the values of "Instituto Cervantes".
- Our Spanish lessons in Colombia are based on 60 minutes.
- We organize activities and excursions every week.







## WHY TO CHOOSE US?

- We provide all students with 24 hours available phone number to call in case of emergency.
- We have a storage room where students can leave their luggage safely when they go travelling.
- Our intensive courses are approved by the German Bildungsurlaub (an educational program for professional and political education offered by several German federal states to employees working in Germany).
- We support students in volunteer work.
- We provide welcome package (the city map and guide and a list of verbs).
- We also have a library where students can borrow literature books, movies and videos about Colombia and Latin America for a maximum of eight days.
- Our school has a wireless internet access for students and a video room.
- We provide lodging with Colombian families or in shared flats with locals as well as in small hotels and bed and breakfast, offering further opportunity to practice Spanish in a friendly environment.





# ACREDITATIONS

What is Bildungsurlaub?

Bildungsurlaub (educational leave) is an educational program for professional or political education offered by several German federal states to employees working in Germany



The employees working in these German federal states (Berlin, Rheinland- Pfalz, Niedersachsen (Hannover), Hessen, Brandenburg, Hamburgo, Schleswig- Holstein) have the right to take one or two paid weeks a year for training in a school certified by the governments of Germany's federal states. It is part of the right for annual training and for that reason these days are not considered vacation. Schools certified by Bildungsurlaub guarantee the quality of service and lodging.

For Spanish World Institute it is an important achievement to receive the official Bildungsurlaub recognition in Germany. Our intensive courses (min. 30 hours) are certified by "Bildungsurlaub". We offer intensive courses both in general Spanish for different levels and Spanish for specific purposes: Spanish plus business, D.E.L.E. preparation, and Colombian culture. These intensive courses, which last one week, combine the learning of this foreign language with cultural, social, political and historical topics about Colombia and Latin America.



## OUR LOCATION



Our school is close to tourist, cultural and business areas, recreation facilities, parks and numerous shops, cafes and restaurants. The Spanish School is also easily accessible by buses from any part of the city.



SWI school is located in Chapinero Alto, a beautiful residential part of Bogotá Colombia. It is in a Colonial house specially refurbished to provide a suitable academic environment without losing its originality and style.







## OUR COURSES

- **General Spanish**  
(15,20,30 lessons por semana)
- **Online Lessons**
- **Business Spanish**
- **One-to –One Tuition**
- **D.E.L.E Preparation**
- **Spanish + Colombian Culture**
- **Spanish +Salsa Lessons**
- **Spanish + Excursions**





# General Spanish courses in Colombia



Ideal course  
description: all  
students



Group size: minimum  
2/ maximum 8



Study for: 15, 20 or  
30 hours per week



Minimum age: 18







## GENERAL SPANISH

**Study for:**

15, 20, or 30 hours per week

**Group Size:**

Minimum 2/Maximum 8

**Start Date:**

Any Monday (except Bank Holidays)

**Course Length:**

Flexible, minimum 1 week

**Minimum Age:** 17**Ideal course for:**

All – Students, Professionals

**Course Description**

The General Spanish classes concentrate on improving every aspect of the language.

This course is focused on developing the communicative skills: listening, spoken interaction and production, writing, grammar, vocabulary, reading and pronunciation.

Our program of studies follows a syllabus which ensures steady progress. There is a test every Friday to give you the opportunity to check your knowledge; on this course you are given homework every day. The levels of the classes range from complete beginner (A1) to proficiency (C2).





## SPANISH + BUSINESS

**Study Business Spanish only for:** 15 hours per week (only afternoon)

**Study Business + General Spanish for:** 30 hours per week (20 hours general Spanish + 10 hours business Spanish).

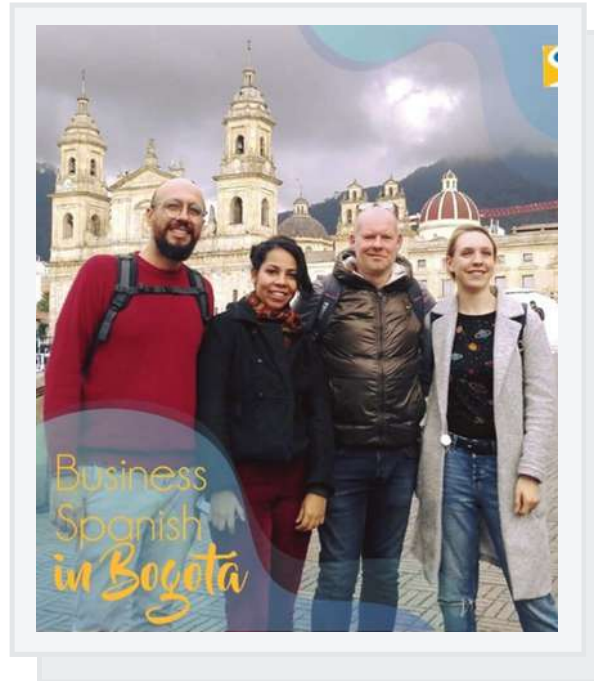
**Group Size:**  
Minimum 2 / Maximum 8

**Start Date:** Any Monday (except Bank Holidays)

**Course Length:** Flexible, minimum 1 week

**Minimum Age:** 20

**Ideal course for:** Professionals, Business students



### Course Description

This course is ideal for people who study business or work in a job that require a good level of Spanish.

This is an intensive course (BS30) which can be taught in group or private depending on the number of students enrolled. In the morning the students develop general skills, while in the afternoon they focus on Spanish for business.

The course develops negotiation workshops, case studies and role plays in marketing, finances, and general management. This program aims to develop those communicative skills needed in the business world.





## ONE TO ONE TUITION

**Study for:** Flexible hours but usually 5, 10 or 20 hours per week

**Group Size:** 1

**Start Date:** Any week day (except Bank Holidays)

**Course Length:** Flexible, minimum 1 hour

**Minimum Age:** 17

**Ideal course for:** All  
- Professionals, Business students



### Course Description

Offered from beginners to advance these classes are taught according to the students requirements.

Our one-to-one courses can help you with any area of the Spanish language that you would like to improve.

Our one-to-one Spanish lessons provides you with and individual course which responds to your unique language needs. The course includes a complete needs analysis and a program of work, agreed on by the teacher and the student and specialized individual study plan will be prepared.





## D.E.L.E. PREPARATION

**Study D.E.L.E. only for:** 15 hours per week

**Study D.E.L.E. plus General Spanish for:** 30 hours per week (20 hours general Spanish + 10 hours D.E.L.E. preparation)

**Group Size:** Minimum 2/  
Maximum 8

**Start Date:** Any Monday (except Bank Holidays)

**Course Length:** Flexible, minimum 1 week

**Minimum Age:** 17

**Ideal course for:** University students, professionals

### Course Description

This course is aimed to prepare those students interested in taking the DELE exam in any of its three levels. This course is focus on general Spanish classes in the mornings and D.E.L.E. preparation in the afternoon.



In class you will concentrate on practice tests-taking techniques, exam strategy for the independent and integrated tasks in the following parts of the exam: Written production, reading comprehension, listening comprehension and oral production.

Certify your  
**SW** spanish





## SPANISH + COLOMBIAN CULTURE

**Study for:** 30 hours per week (20 hours of general Spanish + 10 hours of Colombian culture classes).

**Group Size:** Minimum 2/  
Maximum 8

**Start Date:** Any Monday  
(except Bank Holidays)

**Course Length:** Flexible,  
minimum 1 week

**Minimum Age:** 17

**Ideal course for:** All



### Course Description

Morning classes concentrate on improving Spanish language by working on the skills Speaking, Writing, Listening, Reading Comprehension or Grammar focusing in the classroom on using language in real situations; in the afternoon the classes are focused on the Colombian customs and culture.





## SPANISH + SALSA LESSONS

### **Study General Spanish**

**for:** 26 hours per week  
(20 hours of general Spanish + 6 hours of salsa lessons).

**Group Size:** Minimum 2 /  
Maximum 8

**Start Date:** Any Monday  
(except Bank Holidays)

**Course Length:** Flexible,  
minimum 1 week

**Minimum Age:** 17



### **Course Description**

This course is based on general Spanish in the morning and salsa lessons in the afternoon. The salsa dance class Syllabus is very carefully constructed to give you a complete learning tool of different steps and its variations.







## SPANISH + EXCURSIONS

### Study General Spanish

**for:** 20 hours of general Spanish + 3 afternoon excursions per week.

**Group Size:** Minimum 2/Maximum 8

**Start Date:** Any Monday (except Bank Holidays)

**Course Length:**  
Flexible, minimum 1 week

**Minimum Age:** 17



### Course Description

This classes give you extra practice to help you to learn to use the new grammar and vocabulary you have gained. Your Teacher will provide error correction to help you meet your learning goals.





## COURSE DESCRIPTION

This is a tailored course where students take Spanish classes in the mornings and have visits and excursions to tourist places in the afternoons and weekends. These trips are organized according to the student's interests and request. Prices of the visits and excursions are additional to the course prices.

The graphic features a background image of a traditional Spanish building with a tiled roof and a balcony with flowers. Overlaid on this is a list of five items, each in a colored pill-shaped box. The title 'Class structure' is written in a large, white, cursive font in the upper right corner. The SW logo is in the upper left corner of the graphic.

- 1. Test on the first day
- 2. Time exercise
- 3. Lessons targeting areas of grammar
- 4. Revisions of skills
- 5. Cultural Activities





## Example spanish Course's week at spanish World Institute

School	Lessons	Monday	Tuesday	Wednesday	Thursday	Friday
9:00 – 10:00	Lesson 1	Module Test	Homework check Grammar review	Homework Check	Homework check Grammar review	Homework check Listening
10:00 – 11:00	Lesson 2	Speaking and vocabulary	Listening	Speaking and Vocabulary	Grammar and Speaking	Pronunciation
11:00 – 11:30	Break (30 minutes)					
11:30 – 12:30	Lesson 3	Listening	Vocabulary	Speaking and Vocabulary	Speaking	Speaking
12:30 – 13:30	Lesson 4	Writing	Grammar and Speaking	Grammar	Writing and Vocabulary	Weekly review
13:30 – 14:30	Lunch Break					
14:30 – 15:30	Lesson 5	Business Spanish	Exam Preparation	Colombian Cultura	Salsa Classes	Activity
15:30 – 16:30	Lesson 6	Business Spanish	Exam Preparation	Colombian Cultura	Salsa Classes	Activity
At Home	Homework	Vocabulary Grammar	Vocabulary	Follow up	Revision	Reading

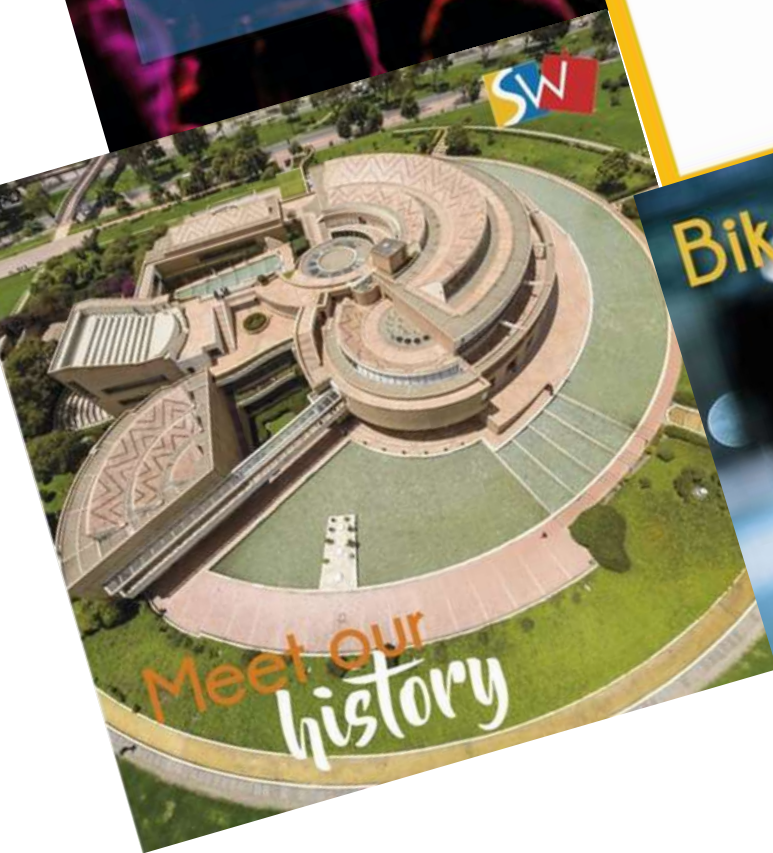
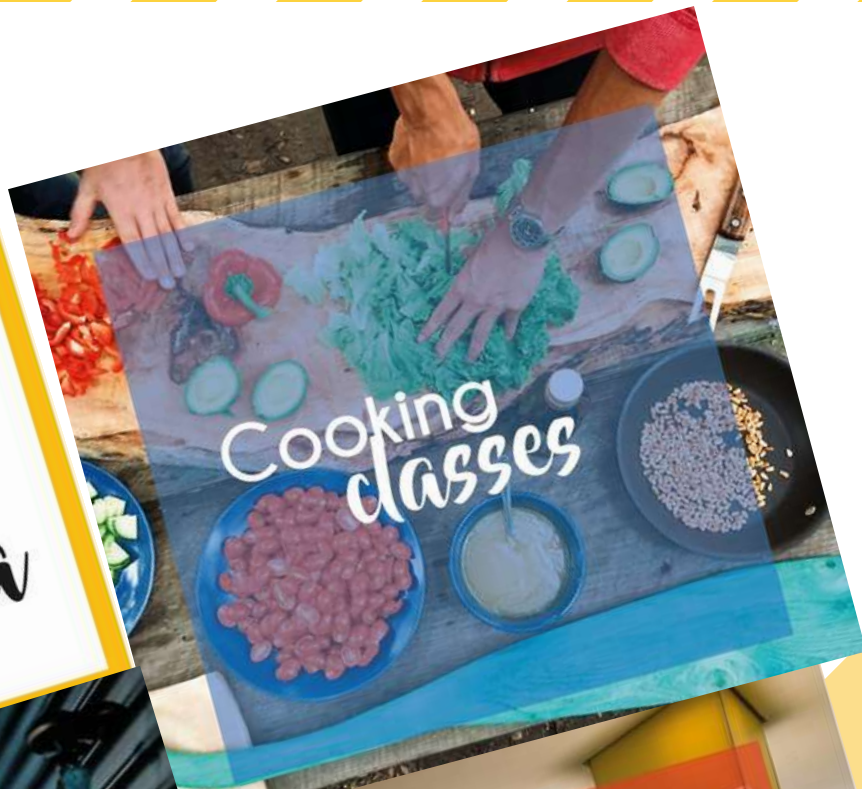


## ENTERTAINMENT & LEISURE

We organize a range of afternoon and evening activities accompanied by staff members. Activities include: pub nights, video evenings and parties, visits to theatres, concerts, restaurants, as well as other events such festivals, sporting events and dance clubs. These activities encourage students to socialize in Spanish. At SWI you will have firsthand experience of our culture, and a great opportunity to make friends and practice Spanish in a real context.











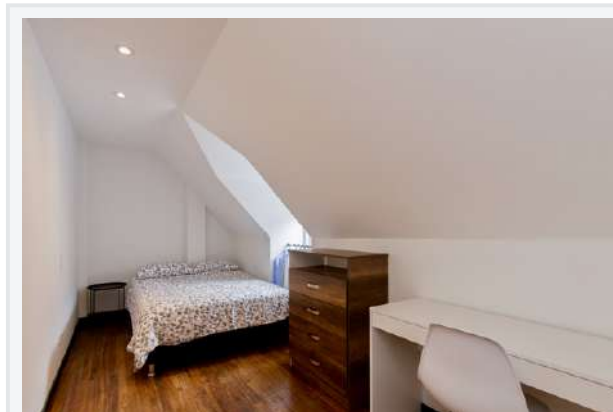
## ACCOMMODATION

Spanish World Institute offers the option of living alone or with other students and share common amenities.

The accommodation service is an essential component of our school. We carefully select host families as well as the other options. The accommodations options we offer are:

**Host families**  
**Guest Houses**

Before arriving in Bogotá, each student receives a short description of the type of accommodation. If it is a host family, it includes details of the various interests of the family members and information about the house and its location. We suggest that students complete all the accommodation arrangements several weeks before arriving.





## HOST FAMILY

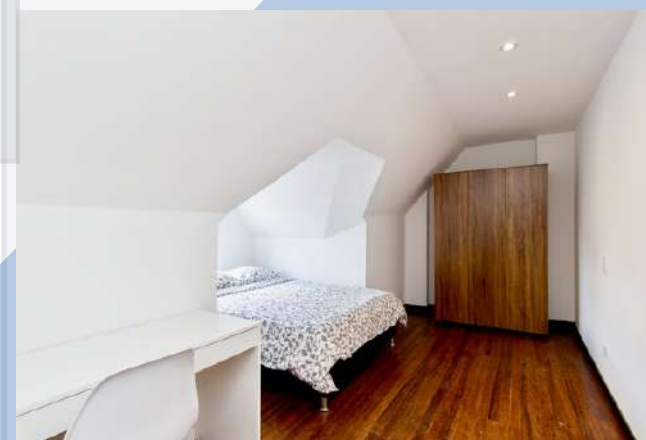
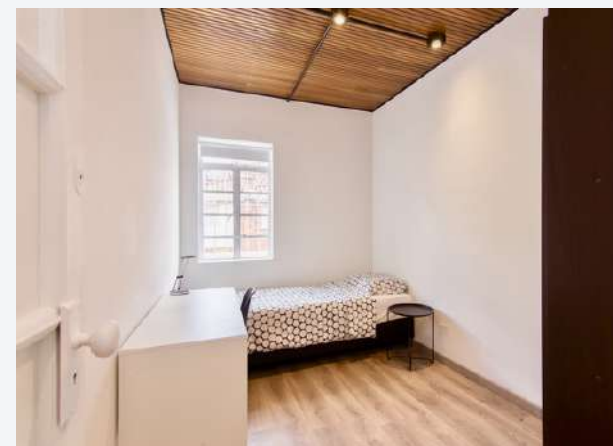
The students have the opportunity to live with Colombian host families, where they can not only practice the Spanish language in a real context but will also have the chance to taste the Colombian culture. Students can be provided with two meals per day (breakfast and dinner), only breakfast. Meal times with the host family are valuable opportunities for students to practice Spanish.





## GUEST HOUSE

Spanish World Institute offers the option of living alone or with other students and share common amenities. This type of self-catering accommodation involves sharing a house and amenities. Some of the rooms are single but there is the possibility to share a room with other students.







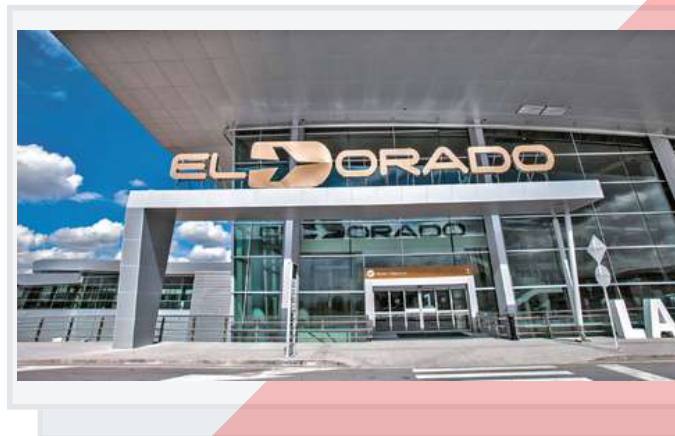
## VISA REQUIREMENTS



Students coming from the following countries do not require visitor visa to enter to Colombia if they are planning to study for less than two (2) months. However once they have arrived in the country they have to ask for the "Leave to remain permit"

Germany, Andorra, Antigua y Barbuda, Australia, Austria, Bahamas, Barbados, Belgium, Belize, Brazil, Canada, Croatia, Cyprus, Denmark, Dominica, Slovakia, United States, Philippines, Finland, France, Greece, Guyana, Hungary, Indonesia, Iceland, Israel, Italia, Jamaica, Japan, Korea, Liechtenstein, Lithuania, Luxemburg, Malaysia, Malta, Monaco, Norway, New Zealand, Netherlands, Portugal, United Kingdom and North Ireland, Czech Republic, Rumania, Saint Kitts y Nevis, San Marino, Santa Lucia, San Vicente y The Grenadines, Singapore, Sweden, Switzerland, Trinidad y Tobago and Turkey.

All students who plan to study for more than two months must apply for a Temporary Student Visa in the nearest Colombian consulate or embassy, on these links, there are more information about the online process



[http://www.cancilleria.gov.co/tramites\\_servicios/visa](http://www.cancilleria.gov.co/tramites_servicios/visa)

<https://youtu.be/auue7FSGflc>

<https://youtu.be/cxA0ZobZ4zk>



## VISA REQUIREMENTS



### Students must provide the following documents:

- "Request of visa" form completed and signed by the applicant.
- Passport in good condition, with at least 2 blank pages.
- Three (3) color photographs, front view, white background 3X3 cms.

- Copy of the passport page where appear the full name, date and place of birth of the holder, and the page containing the latest Colombian visa if any, and last entry stamp or exit of Colombia, according to the case.
- Copy of resolution of legal recognition of the Spanish School.
- Documents showing the financial solvency of the applicant to remain in the territory.
- Copy of certificate of admission or enrollment of the Spanish School and receipt payment of the school fees.



Overseas students have to provide the Spanish School acceptance letter to the immigration officers upon arrival. Students might be asked for a return ticket in order to be given the leave to remain permit.

It is advisable that the students have a medical certificate in case the immigration authorities or the Colombian embassy, ask for it.

Once the students enter the country (regardless the required visa or not) they have 15 days to register it at the "Unidad Administrativa Especial Migración Colombia".

Please note that a student visa does not authorized holders to carry other activities into Colombia like working or investing. To do so the person needs to ask for the respective visa.



## BOGOTÁ

**The climate** in Colombia is extremely variable and in Bogotá which is 2,600 metres above sea level the situation is the same. Overall, it is much cooler than the Eastern plains and December, January and February are usually the driest months. The average temperature for every month of the year is 58 F (14C) but it can reach 80F (27C) in the shade on the hotter days and at night it can cool down to as low as 38F (3C). It also rains quite a lot but this is usually confined to the months between March and November where rain and hail storms can be very heavy.

### Electricity

Electricity in Colombia operates at 110 volts and plugs are the flat two-pin US type.

### Time Zone

Bogotá uses Eastern Standard Time which is five hours behind Greenwich Mean Time.



### Currency

The currency used in Bogotá is the peso (Col\$). The notes come in denominations of 2,000, 5,000, 10,000, 20,000, 50,000 and 100.000 pesos and the coins in use are 50, 100, 200, 500, and 1000 pesos. You should also be aware of fake notes as they are rampant in the city but the good news is that they are pretty easy to recognize as they are generally made of a much poorer quality than the genuine article.







## THINGS TO SEE

Bogotá is one of the southern hemisphere's principal centres for writers, architects, intellectuals and artists and each one of the professions manifests itself throughout the city. Home to the national museum and the national cathedral, these are just two of the multitude of magnificent museums and churches located throughout the city. As well as impressive interiors, you will also see a fascinating mixture of colonial architecture and modernistic structures which give the city a unique appearance and one worthy of checking out.



Generally speaking, Bogotá can be divided into four large zones; the central zone between carreras 1 and 14 and calles 5 and 34. This area includes the colonial neighbourhood of La Candelaria and is where the majority of government offices, museums, churches and other buildings of historical, artistic and cultural interest are situated. The northern zone is the modern commercial sector and is where the majority of cultural and activities take place.

The southern zone is mainly industrial working class and the western zone is where you will find the city's various parks and sports centres as well as El Dorado Airport.





One of the sights just outside the metropolitan area is the shrine of Monserrate. This is located on a nearby mountain and offers breathtaking views of the city. Also in the locality, you will see the unique underground Salt Cathedral of Zipaquirá and the world famous Tequendama Falls which plunge through a canyon in the Andean jungle.



## ENTERTAINMENT

The most popular entertainment venues in Bogotá are situated in the Zona Rosa region which is located between Carreras 11 and 15 and Calles 81 and 84. Here you will find a vast array of cafes, pubs, clubs and live music venues. Outside the Zona Rosa, there are also several discotheques located on Calle 94 and Pepe Sierra Avenue.

Caribbean music is also very popular in the Colombian capital and there are several clubs which offer both salsa and reggae music to its clients. A bohemian and informal atmosphere makes it very easy to unwind after a day of doing the tourist thing.





## GETTING AROUND

While most of the main tourist attractions are within walking distance of each other, it is always helpful to know that the bus service in Bogotá covers the entire city. There is a bus system which is called TRANSMILENIO which has official stops. The very reasonable fare is paid in the station and passengers can buy individual tickets or several trips. There is also the SITP system (blue and dual buses), ruled by TRANSMILENIO, which covers the routes the red buses do not cover.

If you are getting a taxi, insist that the driver uses the metre. There is a standard charge of about US\$1.25 before your journey starts and after that the fare is calculated by units which are transferred into pesos. There should be a chart in every taxi showing you the list of units so you can ensure that you are not being overcharged.







**"Book your course with Spanish World  
Institute and make maximum progress in  
Spanish during an unforgettable stay in  
Bogotá"**

General Spanish courses will start every Monday.

Minimum period of  
enrolment 1 week

The school is open from 2 January 2023 - 23 December  
2023

**Colombian Holidays  
2023**

January 01, 09

March 20

April 6, 7

May 01, 22

June 12, 19

July 03, 20

August 07, 21

October 16

November 06, 13

December 8, 25



SPANISH WORLD INSTITUTE

## **HEADQUARTERS**

**Carrera 4A No 56-56 Casa Esquina  
Bogotá – Colombia**

**WhatsApp: +57 3105668504**

**Mobile: +57 3105668504**

**Email: [info@spanishworldinstitute.com](mailto:info@spanishworldinstitute.com)**

**Skype: [spanishworldinstitute.com](https://www.skype.com/name/spanishworldinstitute.com) Website:**

**[www.spanishworldinstitute.com](http://www.spanishworldinstitute.com)**